



INTERIOR

Product Catalogue

www.osmo.ca

About Osmo	03
The Osmo Difference	04
A True Hardwax Oil	05
Accreditations	07

INTERIOR PRODUCTS

Polyx®-Oil <small>HIGH SOLID</small>	10
Polyx®-Oil Pure <small>FULL SOLID</small>	12
Wood Wax Clear Extra Thin	14
TopOil <small>HIGH SOLID</small>	16
Chopping Board Oil	18
Spray Polyx®	20
Wood Wax Finish	22
Oil Stain	24

MAINTENANCE PRODUCTS

Liquid Wax Cleaner	28
Maintenance Oil	29
Wash and Care	30
Spray Cleaner	31
Intensive Cleaner	32
Opti-Set	33
Floor Maintenance Kit	33
Brush Cleaner and Thinner	33

APPLICATION TOOLS

Telescopic Handle	36
Roller Frames	36
Microfiber Rollers	36
Floor Brushes	37
Hand Pad Holder	37
FloorXCenter and Application Pads	38
Flat Brushes	39
Easy Pads	39
Double Blade Trowel	39

MIXING COLOURS

Guide to mixing custom Wood Wax Finish colours	40
Application Recommendations	45
Product Recommendations based on Wood Species	46
Sanding Directions	48
Flooring, countertops, tables and high-traffic areas application tips	50
FAQs	51
Contact Information and Credits	52



Münster, Germany

Celebrating over 140 years of expertise and innovation in the wood industry.

Osmo was founded in 1878 as a small timber mill in the hills of the Sauerland region of Germany. This family owned and operated business processed wood for over 90 years, before it decided to use its wealth of experience and knowledge to develop a superior wood finish to what was available at the time.

In 1964, Osmo created a division solely invested in researching and developing high quality, durable wood finishes. Lacquers and varnishes were the most popular option for colouring wood at the time, but the downside was how they cracked, peeled, and required complete sanding and refinishing. Osmo set out to engineer a wood finish that was microporous and would not crack or blister. In 1978 Wood Wax Finish Clear Extra Thin was developed - the world's first brushable oil. In 1997, Polyx®-Oil, the first wood finish of its kind to combine both oil and wax ingredients was released.

Osmo continues to develop environmentally responsible interior and exterior products that are moisture and dirt resistant, very easy to maintain and highly regarded as a natural, high quality finish. Osmo products are sold in over 80 countries, six continents and thousands of retailers worldwide.

Every can of Osmo has been developed, manufactured and packaged in Münster, Germany and receives the "Made In Germany" stamp of quality. This, in addition to Osmo's over 140 years of expertise and innovation in the wood industry, ensures quality and consistency with every purchase of an Osmo product.



The difference between our Polyx®-Oils compared to traditional, oil-based finishes, is the unique oils and waxes.

Lacquer and Water-Based Finishing Systems



ADVANTAGES

- Forms a film on the top of the wood surface
- Short term resistance against liquids
- Protects from abrasion
- Easy maintenance

DISADVANTAGES

- Costly and invasive
- Needs sanding before renovations
- Spot repairs are not possible
- Cracks, flakes, blisters and peels
- Covers the natural wood grain and colour

Traditional Oil-Based Finishing Systems



ADVANTAGES

- Oil penetrates and protects from the inside out
- Accentuates the natural grain of the wood
- Can be simply and partially renovated
- Does not crack, flake, blister or peel

DISADVANTAGES

- Insufficient liquid and stain resistance
- Time consuming and constant maintenance
- Does not protect against dirt, moisture or wear

Osmo Hardwax Oil Finishing System



ADVANTAGES

- Protects the wood on the inside and the outside
- Accentuates the natural grain of the wood
- Can be easily and partially renovated & repaired
- Does not crack, flake, blister or peel
- Resistant to moisture and dirt
- Easy maintenance

DISADVANTAGES

One system. All the advantages.
None of the disadvantages.

Through years of experience and accumulated knowledge of working with woods, Osmo developed a range of wood finishes that **seal and protect all wooden surfaces from the inside-out**. Our finishes are all **microporous** so the wood retains its ability to 'breathe' (absorb and release moisture), preventing cracking, blistering and peeling that you would normally observe in a film-forming wood finish. The Oils **strengthen** the fibers of the wood from the inside and the Waxes form an extremely **durable** coating to **protect** the exterior from moisture and dirt.

All the ingredients in our Polyx®-Oils are all **naturally derived, environmentally friendly** and come from **renewable resources**, making Osmo a very sustainable brand.

We use a high content of colour pigments and oils in our products, so that our **coverage rate is twice** that of most other finishes. Our pigments are approved for use in the food industry, much like our other natural ingredients, making Osmo products **safe for humans, plants and animals** when dry.

Osmo products are high-quality wood finishes that require **minimal application** and **maintenance** steps. Our hardwax-oils do not require thinning or priming before use and a thin, even coat provides a high coverage. The **workability** of our hardwax-oils allow users to finish large areas, without the risk of brush strokes or an uneven application. For renovations, Osmo treated surfaces **do not need to be sanded**, simply clean and apply another coat after several years to produce the same high quality results.

Soybean Oil, Thistle Oil, Sunflower Oil

Ingredients we see on a daily basis in the food industry and in skincare products.

Candelilla Wax, Carnauba Wax

Derivative of raw plant material used in the food industry.

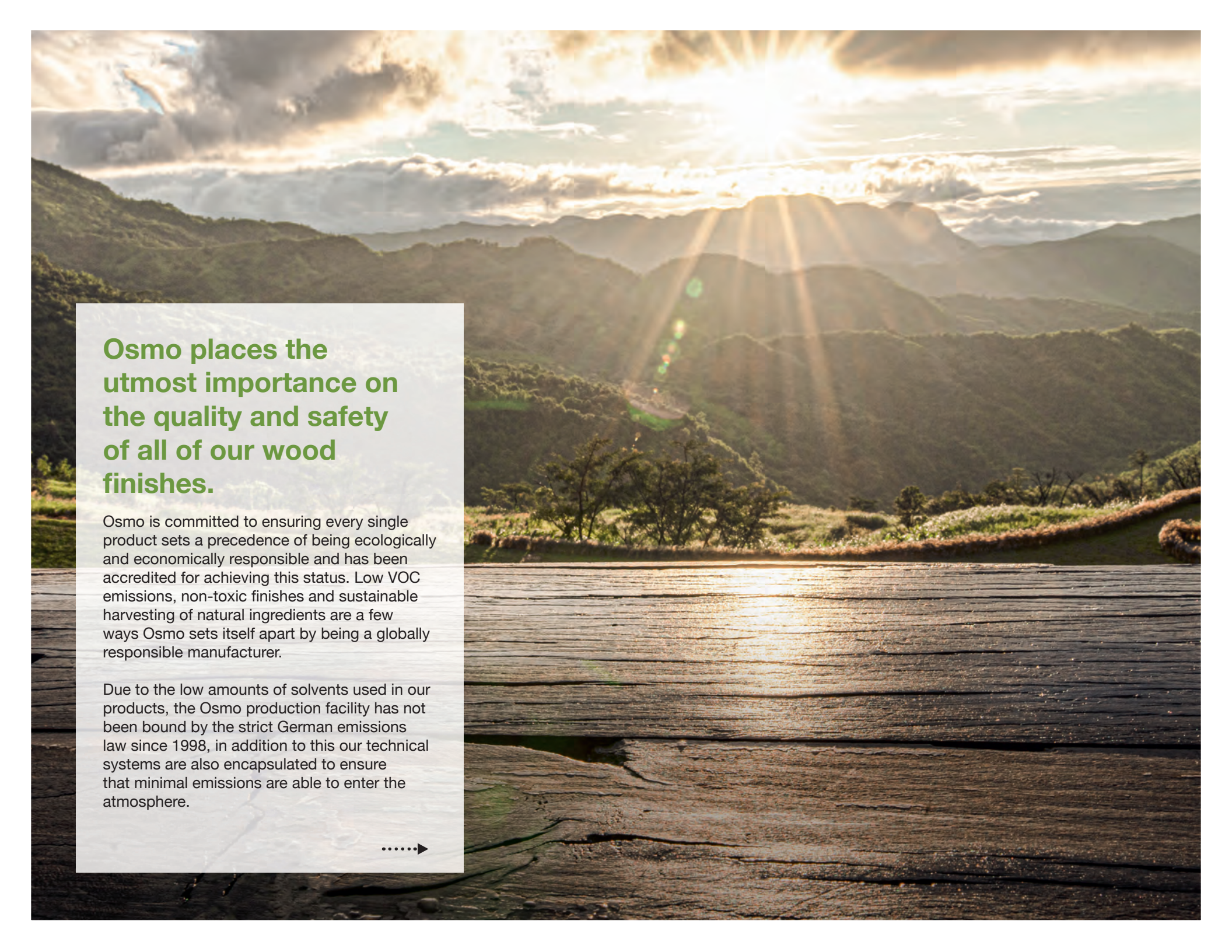
Black Iron Oxide, Yellow Iron Oxide, Red Iron Oxide, Titanium Oxide

Our colour pigments originate from natural resources, and are permitted for use in the food industry.

Dearomatized Mineral Spirit

The dearomatized Mineral Spirit used in Osmo is vastly different from conventional solvents used in coatings. Osmo solvent is benzene and heavy metal free and complies with the purity demands of the European Pharmacopoeia** industry. Despite it's safety, we use a minimal amount of this ingredient to make our products easy to apply with a brush, roller or spray gun.

** The European Pharmacopoeia provides common quality standards throughout the pharmaceutical industry in Europe to control the quality of medicines, and the substances used to manufacture them. These standards apply to medicines for both human and veterinary use.



Osmo places the utmost importance on the quality and safety of all of our wood finishes.

Osmo is committed to ensuring every single product sets a precedence of being ecologically and economically responsible and has been accredited for achieving this status. Low VOC emissions, non-toxic finishes and sustainable harvesting of natural ingredients are a few ways Osmo sets itself apart by being a globally responsible manufacturer.

Due to the low amounts of solvents used in our products, the Osmo production facility has not been bound by the strict German emissions law since 1998, in addition to this our technical systems are also encapsulated to ensure that minimal emissions are able to enter the atmosphere.





FOOD SAFE

Osmo uses carefully harvested natural oils (sunflower, soya and thistle oils) and hard waxes (carnauba and candelilla waxes) for its finishes. When dry, our finishes fulfill both DIN EN 71.3 (suitable for children's toys) and DIN 53160 (resistant to perspiration and saliva) requirements, making them safe for humans, animals and plants. Our TopOil ^{HIGH SOLID} and Chopping Board Oil has been specifically engineered for food safety and abides by the strict regulations of the EURO-Norm 1186 part 5/14 certification, making it suitable for chopping boards, kitchen counters, children's toys and much more.



LOW-VOC

All Osmo finishes are based on rapidly renewable resources which are further processed to ensure purity, whereby only a minimal amount of highly refined solvent (according to European Pharmacopoeia) is added to ensure products perform properly. All Osmo products are in accordance with, and certified to, relevant VOC-regulations as per DIN EN ISO 9001:2000 (Quality management systems) and 14001 (environmental management systems). This certifies that Osmo, is a responsible manufacturer of wood finishes.



OSMO INNOVATION

Osmo is continuously researching, testing and launching new products. In 1985 Osmo launched a range of products called **High Solid**, which contain a higher percentage of solid ingredients, for a very high quality wood finish. In recent years our Chemists have been focusing on developing new formulas that are completely free from solvents and VOC's but still have the necessary properties of a world-class wood finish. From this research a new line of products called **Full Solid**, has been created. Osmo continues to strive to develop this technology further for years to come.





Interior Products

CLEAR FINISHES



Polyx®-Oil HIGH SOLID
The best selling
hardwax-oil worldwide
10



Polyx®-Oil Pure FULL SOLID
Solvent-free and LEED
compliant hardwax-oil
12



**Wood Wax Clear
Extra Thin**
Extra penetrating finish for oily
hardwood and exotic woods
14



TopOil HIGH SOLID
Food safe certified
hardwax-oil
16



Chopping Board Oil
Specifically designed for
use on chopping boards
18



Spray Polyx®
Fast drying and
designed for professional
spray application
20

COLOUR FINISHES



Wood Wax Finish
All-in-one hardwax-oil
coloured wood finish
22



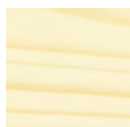
Oil Stain
One coat for transparent, two
coats for intensive colour
24



Polyx[®]-Oil HIGH SOLID

THE BEST SELLING HARDWAX OIL WORLDWIDE.

The original hardwax oil developed for hardwood floors, furniture and other interior woodwork. It can be easily applied with a cloth, brush, roller or single disc floor buffer.



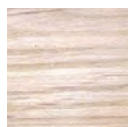
Gloss
3011



Satin Finish
3043



Matte Finish
3031



Raw
3051

Approx Coverage
258 ft²/L (24 m²/L) per coat

Application Temperature
+5°C to 35°C

Number of Coats
2 coats

Approx Dry Time
8 - 10 hours

Available Sizes
5mL / 125mL / 750mL / 2.5L / 10L

Storage
5 years or longer if unopened



01

Based on renewable raw materials - soybean, sunflower, thistle oil, and carnauba and candelilla wax

02

Safe for humans, animals and plants, according to DIN EN 71.3

03

Dries within 8-10 hours, water resistant when cured

04

Microporous and breathable. Will not crack, peel or blister

05

Can be easily maintained with no sanding required

06

Easy to apply. Can use a roller, brush or buffer



APPLICATION METHOD

FIRST COAT:

1. Using the Osmo Microfiber Floor Roller / Osmo Floor Brush (for larger areas) or an Osmo Natural Bristle Brush (for smaller areas), work product thinly and evenly into wood in the direction of the wood grain. Brush out any lap marks or stop marks in the direction of the grain
2. Allow 8-10 hours drying time, ensuring the space is well ventilated
3. Clean roller / brush with Osmo Brush Cleaner and Thinner (benzene-free) or Mineral Spirits

SECOND COAT:

4. Apply the second coat thinly, as above
5. Alternatively, the second coat may be applied by buffing the product into the surface using a single disc buffer and non-abrasive white pad

Note: The finish may also be buffed into the wood, in thin applications using a non-abrasive white pad or microfiber applicator pad.



Polyx[®]-Oil Pure FULL SOLID

SOLVENT-FREE, DIISOCYANATE-FREE HARDWAX-OIL.

Extremely high coverage, solvent-free one-component Hardwax-Oil. No harmful Diisocyanates/Hardeners required - dries in 10-12 hours.



Clear Satin
5125

Approx Coverage
650 ft²/L (60 m²/L) per coat

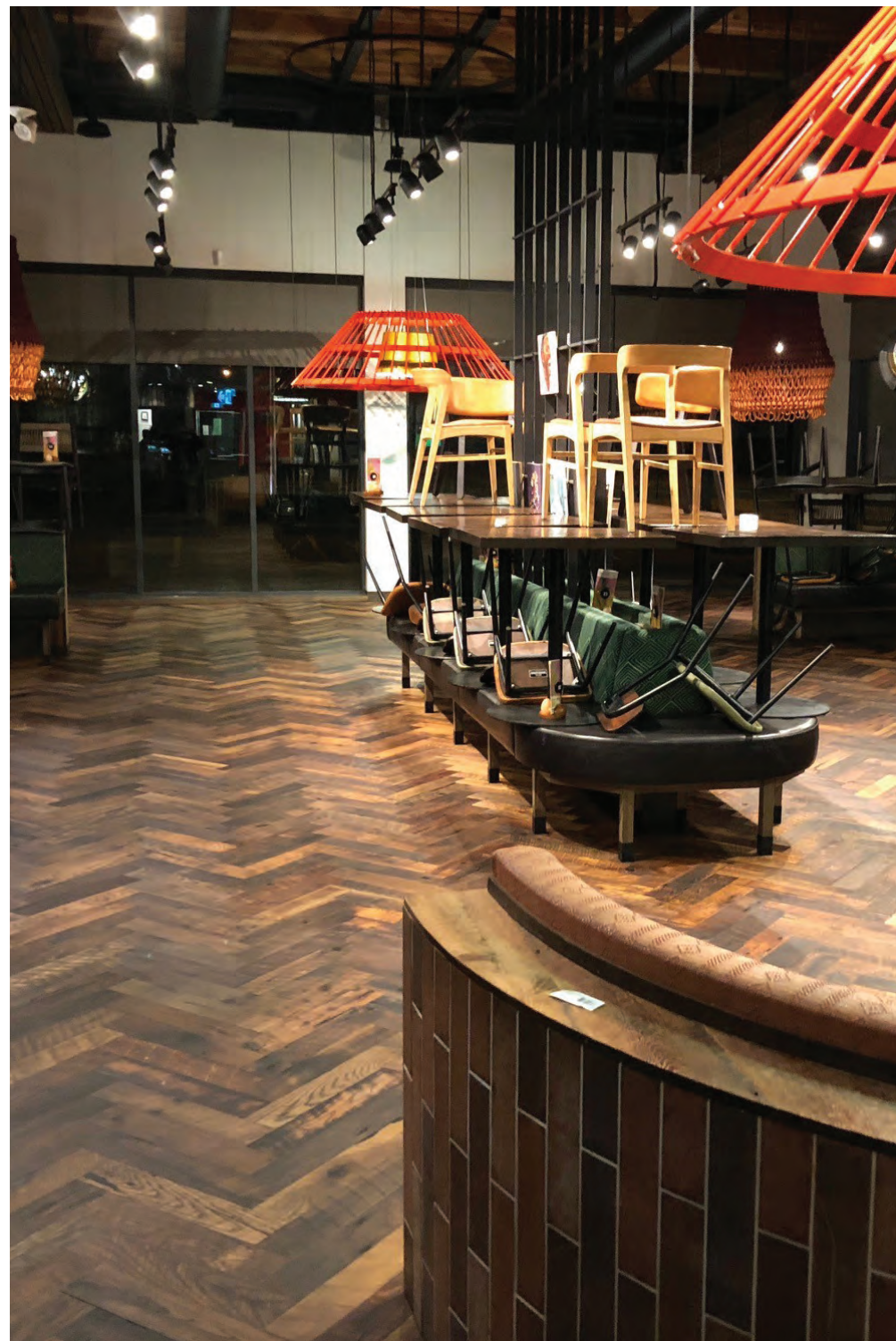
Application Temperature
+5°C to 35°C

Number of Coats
2 coats

Approx Dry Time
10 - 12 hours

Available Sizes
125mL / 1L

Storage
5 years or longer if unopened



01

Based on renewable raw materials - soybean, sunflower, thistle oil, and carnauba and candelilla wax

02

Safe for humans, animals and plants, according to DIN EN 71.3

03

Dries within 10-12 hours, water resistant when cured

04

Solvent free and LEED compliant

05

Will not crack, flake, blister or peel

06

Does not contain harmful diisocyanate hardeners



APPLICATION METHODS

FLOORING APPLICATION

FIRST COAT:

1. Stir thoroughly prior to use. **Do not dilute.**
2. Trowel the product thinly onto the wood surface using an Osmo Double Sided Scraper or similar
3. Allow approx. 35-45 minutes for the product to penetrate surface
4. Disperse and polish the surface using a buffer and red pads
5. Allow to dry 10-12 hours or overnight before applying second coat

SECOND COAT:

6. Trowel the second coat thinly and evenly onto the surface
7. Allow approx. 35-45 minutes for product to penetrate surface
8. Disperse oil and polish the surface using a buffer and red pads
9. Allow 10-12 hours drying time. Allow for good ventilation when drying.

Tip: The sheen of the finish can be raised by polishing the surface with a buffer and a white pad once the second coat has dried.

FURNITURE APPLICATION:

1. Stir thoroughly prior to use. **Do not dilute.**
2. With a white scotchbrite pad work the product into the wood surface
3. Be sure to thinly and evenly coat the surface and leave on the surface for approx. 35 minutes
4. With a clean lint-free cloth. Ensure all excess product is removed from surface
5. Approx. 10-12 hours drying time. Allow for good ventilation whilst drying
6. Apply second coat following steps 1-5



Wood Wax Clear Extra Thin

PERFECT FOR OILY WOODS

Extra penetrating formulation specially engineered for oily hardwood and exotic woods. It can be used either as a stand alone finish or as a base coat for Osmo Polyx®-Oil(s).



Clear Satin
1101

Approx Coverage
258 ft²/L (24 m²/L) per coat

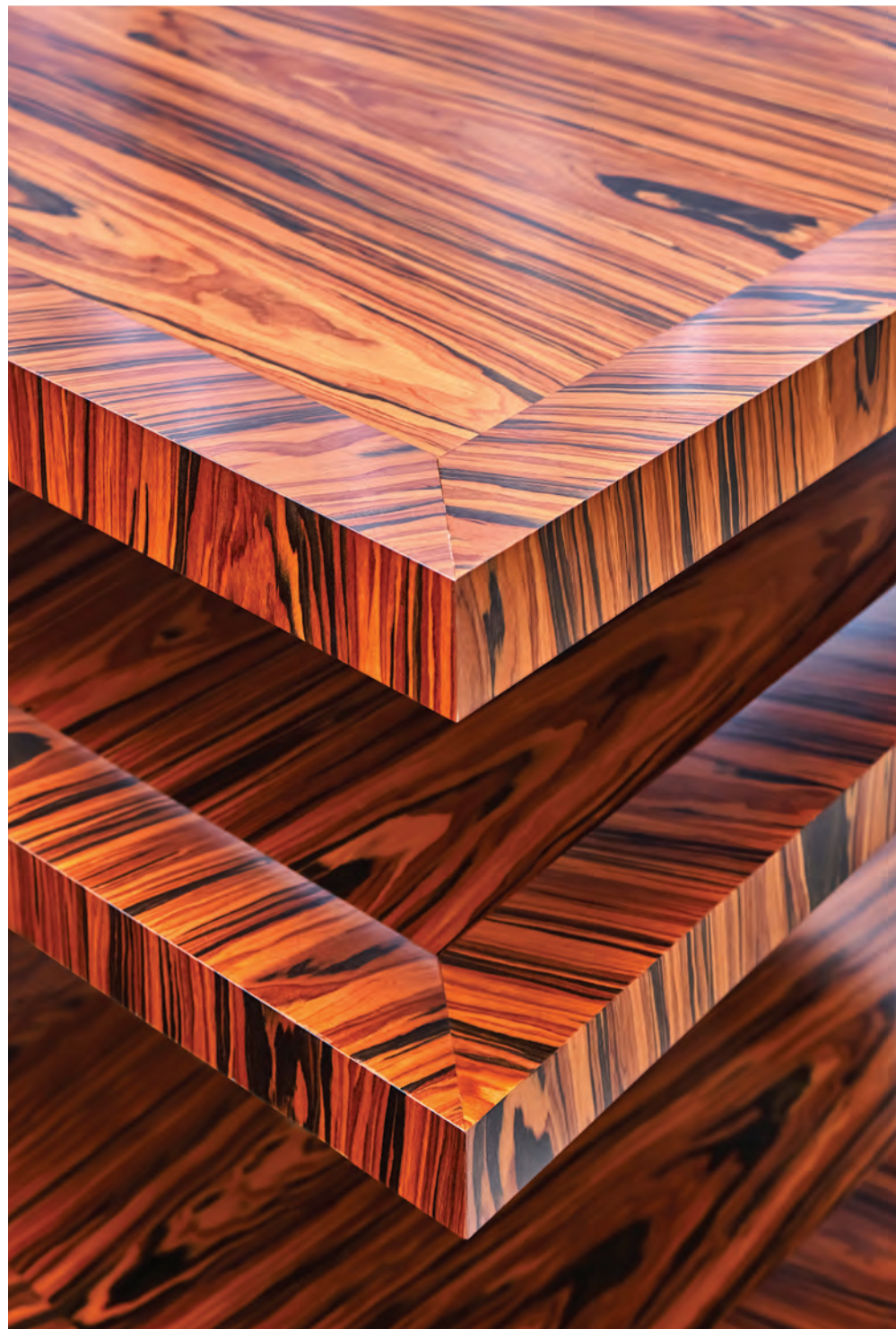
Application Temperature
+5°C to 35°C

Number of Coats
1 - 2 coats

Approx Dry Time
12 hours

Available Sizes
5mL / 125mL / 750mL

Storage
5 years or longer if unopened



01

Based on renewable raw materials - soybean, sunflower, thistle oil, and carnauba and candelilla wax

02

Safe for humans, animals and plants, according to DIN EN 71.3

03

Dries within 12 hours, water resistant when cured

04

Microporous and breathable. Will not crack, flake, blister or peel

05

Can be easily maintained with no sanding required

06

Easy to apply. Can use a roller, brush or buffer



APPLICATION METHOD

1. Using the Osmo Microfiber Floor Roller / Osmo Floor Brush (for larger areas) or an Osmo Natural Bristle Brush (for smaller areas), work product thinly and evenly into wood in the direction of the wood grain. Brush out any lap marks or stop marks in the direction of the grain
2. Allow to dry for 30 mins - ensure the space is well ventilated
3. Remove excess oil from the surface using a cloth
4. Clean brushes with Osmo Brush Cleaner and Thinner (benzene-free) or Mineral Spirits
5. Allow 12 hours drying time under normal climatic conditions for Osmo Wood Wax Finish Clear Extra Thin to fully dry

Tip: For a high-sheen effect and extra durability you can apply one coat of Wood Wax Finish Clear Extra Thin as a base coat, and use Polyx®-Oil for the second coat.



TopOil HIGH SOLID

FOOD SAFE HARDWAX-OIL

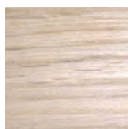
Water repellent and dirt resistant and DIN and EN rated for direct contact with food, making it ideal for counter tops, tabletops, chopping boards and charcuterie boards.



Clear
3056



Acacia
3026



Natural
3025

Approx Coverage
258 ft²/L (24 m²/L) per coat

Application Temperature
+5°C to 35°C

Number of Coats
2 coats

Approx Dry Time
8 - 10 hours

Available Sizes
5mL / 500mL



01

Based on renewable raw materials - soybean, sunflower, thistle oil, and carnauba and candelilla wax

02

Safe for humans, animals and plants, according to DIN EN 71.3

03

Dries within 8-10 hours, water resistant when cured

04

Microporous and breathable. Will not crack, flake, blister or peel

05

Can be easily maintained with no sanding required

06

Easy to apply. Can use roller, brush, or pad



APPLICATION METHOD

WITH AN OSMO NATURAL BRISTLE BRUSH OR MICROFIBER ROLLER

1. Stir product thoroughly before starting
2. Using an Osmo Brush or Roller, work the product thinly and evenly into the wood. **Do not wipe away.**
3. Allow 8-10 hours drying time - ensure the space is well ventilated
4. Apply a second coat in the same way as the first
5. Clean brushes with Osmo Brush Cleaner and Thinner (benzene-free) or Turpentine

Tip: If there is any roughness after the first coat, the surface may be lightly sanded with P320 grit sandpaper between coats

WITH AN OSMO WHITE PAD OR MICROFIBER PAD

1. Stir product thoroughly before starting
2. Using an non-abrasive white pad or Osmo Microfiber Pad, work product thinly and evenly into wood in a circular or figure of 8 pattern
3. Allow 8-10 hours drying time - ensure the space is well ventilated
4. Apply the second and third coats in the same way as the first

Tip: If you can see swirly marks when buffing then there is too much oil on the surface, turn the pad over or wipe away excess



Chopping Board Oil

OIL-WAX WOOD COATING

Specifically designed for use on chopping boards, and is tough and hardwearing. Water repellent and dirt resistant and DIN and EN rated for direct contact with food.



Clear-Matte
3099

Approx Coverage
258 ft²/L (24 m²/L) per coat

Application Temperature
+5°C - 35°C

Number of Coats
2 coats

Approx Dry Time
8 - 10 hours

Available Sizes
500mL



01

Based on renewable raw materials - soybean, sunflower, thistle oil, and carnauba and candelilla wax

02

Safe for humans, animals and plants, according to DIN EN 71.3

03

Dries within 8-10 hours, water resistant when cured

04

Microporous and breathable. Will not crack, peel or blister

05

Can be easily maintained with no sanding required

06

Easy to apply. Can use roller, brush, or oil finish application fleece



APPLICATION METHOD

WITH AN OSMO NATURAL BRISTLE BRUSH, MICROFIBER ROLLER OR OIL FINISH APPLICATOR FLEECE

1. Stir product thoroughly before starting
2. Using an Osmo Brush, Roller, or an Oil Finish Applicator Fleece, work the product thinly and evenly into the wood. **Do not wipe away.**
3. Allow 8-10 hours drying time - ensure the space is well ventilated
4. Apply a second coat in the same way as the first
5. Clean application tools with Osmo Brush Cleaner and Thinner (benzene-free) or Turpentine

Note: After 2 - 3 weeks, the surface will be fully cured. Applying the product too generously and insufficient ventilation will lead to a delay in drying time.

WITH AN OSMO WHITE PAD OR MICROFIBER PAD

1. Stir product thoroughly before starting
2. Using a non-abrasive white pad or Osmo Microfiber Pad, work product thinly and evenly into wood in a circular or figure of 8 pattern
3. Allow 8-10 hours drying time - ensure the space is well ventilated
4. Apply the second and third coats in the same way as the first

Tip: If you can see swirly marks when buffing then there is too much oil on the surface, turn the pad over or wipe away excess



Spray Polyx®

SPRAYABLE HARDWAX OIL

Fast drying hardwax oil designed for professional spray application with HVLP, Airless, Air-Assisted or Gravity-fed systems.



Clear Satin
3078



Clear Gloss
3082

Approx Coverage
258 ft²/L (24 m²/L) per coat

Application Temperature
+5°C - 35°C

Number of Coats
2 coats

Approx Dry Time
4-6 hours

Available Sizes
2.5L / 10L



01

Based on renewable raw materials - soybean, sunflower, thistle oil, and carnauba and candelilla wax

02

Safe for humans, animals and plants, according to DIN EN 71.3

03

Dries within 4-6 hours, water resistant when cured

04

Microporous and breathable. Will not crack, peel or blister

05

Can be easily maintained with no sanding required



APPLICATION METHODS

FIRST COAT:

1. Approx. 20 - 40 g/m2 using a cup gun, HVLP gun, airless or air-assisted airless device
2. Dust dry at room temperature for approx 2 - 3 hours **or** at 50°C ambient air for approx 1 hour
3. The wood will be ready for sanding after 6 - 8 hours (air drying) **or** 2 - 3 hours (50°C) respectively.
4. Using 320 Grit sandpaper, de-nib surface lightly

SECOND COAT:

5. After sanding repeat spray technique for the second coat
6. Either dust dry at room temperature for approx 2 - 3 hours **or** at 50°C ambient air for approx 1 hour. Wood is stackable after 12 - 16 hours

The surface will harden further within 2 - 3 weeks.

Tip: This product can be directly sprayed onto **Wood Wax Finish** or **Oil Stain** in a wet-on-wet application. It can take considerably longer to dry in cases where the air is humid or the product over applied.



Wood Wax Finish

WOOD WAX FINISH

All-in-one oil-wax based wood finish designed to colour and protect wooden furniture. Can be top-coated with Polyx®-Oil for flooring applications.

TRANSPARENT TONES

				
Clear 3101	Beech 3102	Light Oak 3103	Oak 3164	Oak Antique 3168
				
Cognac 3143	Cherry 3137	Mahogany 3138	Pine 3123	Walnut 3166
				
White 3111	Birch 3136	Silk Grey 3119	Granite Grey 3118	Ebony 3161

Approx Coverage
258 ft²/L (24 m²/L) per coat

Application Temperature
+5°C to 35°C

Number of Coats
1 coat + Polyx®-Oil top coat for flooring
1 or 2 coats for furniture

Approx Dry Time
8 - 10 hours

Available Sizes
5mL / 375mL / 750mL / 2.5L

DISCOVER
MIXING CUSTOM
COLOURS
page 40



INTENSIVE TONES



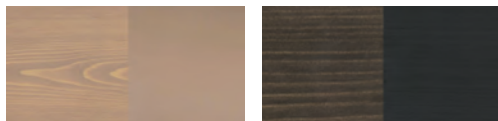
Red
3104

Yellow
3105



Blue
3125

Green
3131



Grey Beige
3132

Black
3169



Silk
3172

Pebble
3181



White-Matte
3186

Snow
3188

Note: All colour shades are a true likeness of the original, after application onto Oak, Pine and Fir. However, some variation may occur due to printing processes. It is advisable to test colours on a small sample, as colour may appear differently on other wood species.



APPLICATION METHOD

FURNITURE APPLICATION

TRANSPARENT (1 coat)

1. Using an Osmo Microfiber Applicator Fleece, work product thinly and evenly onto surface
2. For a more solid colour, ensure product is applied evenly, then proceed to step 4
3. For a subtle effect allow approx 15 minutes for oil to penetrate and then working with the grain, remove all excess product from the surface with a lint-free cloth
4. Allow 8-10 hours drying time, ensuring space is well ventilated

INTENSIVE (2 coats)

1. Once the first coat has dried (8-10 hours) apply a second thin coat using an Osmo Microfiber Pad
2. Allow 8-10 hours drying time, ensuring space is well ventilated

FLOORING APPLICATION

IMPORTANT: Only one coat of any Wood Wax Finish tone can be applied on flooring as the second coat must be a clear Polyx®-Oil.

1. Stir thoroughly prior to use
2. Trowel the product thinly onto the floor using an Osmo Double Sided Trowel
3. Using a single disc buffing machine and a non-abrasive white pad, buff the product thinly and evenly into the surface
4. Allow 8-10 hours drying time, ensuring the space is well ventilated
5. In order to protect pigments, 1 coat of clear Osmo Polyx®-Oil is necessary as a top coat

Tip: All colours of Wood Wax Finish may be mixed together to create custom colours and tones.



Oil Stain

HIGHLY PIGMENTED

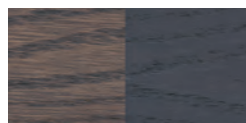
High quality natural oil based stain used to colour hardwood flooring and furniture prior to applying Polyx®-Oil(s). One coat for transparent, two coats for intensive colour.



White
3501



Silver Grey
3512



Graphite
3514



Jatoba
3516



Light Grey
3518



Natural
3519



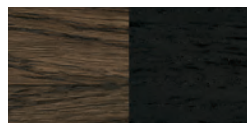
Havanna
3541



Cognac
3543



Tobacco
3564



Black
3590

Approx Coverage

258 ft²/L (24 m²/L) per coat

Application Temperature

+5°C - 35°C

Number of Coats

1 - 2 coats

Approx Dry Time

12 hours

Available Sizes

5mL / 125mL / 500mL / 1L



01

Based on renewable raw materials - soybean, sunflower, thistle oil, and carnauba and candelilla wax

02

Safe for humans, animals and plants, according to DIN EN 71.3

03

Dries within 12 hours or 3-4 with hardener, water resistant when cured

04

Microporous and breathable. Will not crack, peel or blister

05

Can be easily maintained with no sanding required

06

Easy to apply. Can use non-abrasive white pad or buffer.



APPLICATION METHOD

TRANSPARENT (1-coat):

1. Stir product thoroughly before starting
2. Using a non-abrasive white pad, buff the product thinly and evenly into the wood
3. Allow approx 12 hours drying time - ensure the space is well ventilated
4. For a Transparent finish, apply a top coat of Polyx®-Oil Clear for added durability against wear and stains, otherwise repeat another coat of the Oil Stain for an Intensive Finish

INTENSIVE (2-coats):

5. Once the first coat has dried (12 hours) apply a second thin coat, in the same method as the first
6. Allow 12 hours drying time - ensure the space is well ventilated
7. Apply a top coat of Polyx®-Oil Clear for added durability against wear and stains, especially for flooring

Tip: To achieve an Intensive colouration in one coat, Oil Stain may be Rolled or Brushed onto the wood surface

Colour tone 3501 White: An intensively white surface for flooring is not recommended as it is more susceptible to dirt, stains, damages and the natural yellowing process.

Colour tone 3519 Natural: A thin coat is recommended either with Osmo Microfiber Roller or Osmo Floor Brush 150 mm. After drying, a coat with a clear Osmo Polyx®-Oil should be carried out.

The natural colour tone of wood is preserved – it does not enhance the tone of wood, no permanent wet effect.

The importance of proper care and maintenance.

With all wooden surfaces, regular cleaning and maintenance is required to keep the finish protected.

Our Osmo maintenance products contain the same oils and waxes found in our Polyx®-Oil. By using our maintenance products the finish is constantly being replenished, unlike Polyurethane cleaners which over time will result in your floors requiring sanding and refinishing. By keeping up with semi-regular maintenance it will increase the lifespan of the finish and result in a longer period of time before re-application is needed.



Maintenance Products

MAINTENANCE PRODUCTS



Liquid Wax Cleaner

For cleaning, refreshing and maintenance

28



Maintenance Oil

Professional maintenance for high traffic and commercial areas

29

CLEANING PRODUCTS



Wash and Care

Water-soluble cleaning concentrate for everyday cleaning

30



Spray Cleaner

A ready-to-use sprayable version of the Wash and Care solution

31



Intensive Cleaner

Effective deep cleaning of wooden floors for professionals

32

KITS AND ACCESSORIES



Opti-Set

33



Floor Maintenance Kit

33



Brush Thinner and Cleaner

33

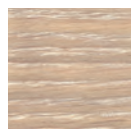


Liquid Wax Cleaner

Osmo Liquid Wax Cleaner is designed for initial cleaning, refreshing and maintenance. Used for both lifting of stubborn stains as well as occasionally refreshing hardwax layer.



Clear
3029



White Transparent
3087
(Available in 1L can only)

Approx Coverage
850 ft²/L (295 m²/L)

Approx Dry Time
30 - 40 mins

Available Sizes
400mL aerosol / 500mL / 1L



APPLICATION METHODS

WITH AN OSMO FLOOR BUFFER / CLOTH

1. Remove dust and dirt with Osmo Wash and Care (page 40)
2. Using a non-abrasive white pad, work a thin, even coat of Liquid Wax Cleaner into the area. If using the Spray, spray 30cm away from surface and massage in with the active-fiber Cloth or a lint-free cloth.
3. Remove excess using a lint-free cloth
4. Allow 30 - 40 mins dry time in a well ventilated area
5. When dry the cleaner can be polished to increase sheen

CLEANING AND REMOVING STAINS

1. Remove dust and dirt with Osmo Wash and Care (page 40)
2. Using an Osmo Hand-Pad and Red Superpad (page 51), scrub a small amount of the Liquid Wax Cleaner into the affected area
3. Wipe away dirt residue

Tip: For heavier stains apply to floor with polishing pad (very fine steel wool) or on floors use a green cleaning pad.

01

Cleans and protects surfaces

02

Replenishes natural hard waxes

03

Removes tough stains



Maintenance Oil

Maintenance Oil contains the same Oils and Waxes found in Osmo Polyx®-Oil to easily maintain and revive high traffic areas of flooring. Designed for the professional re-oiling of hardwax oil, and oiled wood surfaces. Easy to use and fast drying (3-4 hrs).



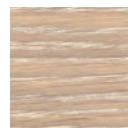
Clear Matte
3079



Clear Satin
3081



Clear
Semi-Matte
Anti-Slip
3098



White Transparent
3440

Approx Coverage
Up to 650 ft²/L (198 m²/L)

Application Temperature
+5°C to 35°C

Number of Coats
1 coat

Approx Dry Time
3-4 hours

Available Sizes
1L



APPLICATION METHOD

WITH A FLOOR BUFFER / APPLICATOR PAD

1. Remove dust and dirt with Osmo Wash and Care (page 40) or if necessary, use Osmo Intensive Cleaner on heavily soiled areas (page 44)
2. Buff one coat into the surface thinly and evenly using a non-abrasive white pad
3. Ensure all excess product is removed from the surface
4. Allow to dry for 4 hours, ensuring the space is well ventilated

01

Contains the same
Oils and Waxes found
in Polyx®-Oil

02

Extends the lifespan on
Osmo treated floors

03

Revives dull or matte
surfaces

04

Resistant to dirt, scuffs
and spillages



Wash and Care

Osmo Wash and Care is a water-soluble cleaning concentrate for the everyday cleaning and care of oiled and waxed wood floors. When used regularly, the highly effective Wash and Care produces a low-maintenance, non-slip surface, due to anti-slip additives.



Clear
8016

Approx Coverage

1 cap of solution to 1L of water

Approx Dry Time

Mop to dry

Available Sizes

1L / 5L



APPLICATION METHOD

WITH THE OSMO MICRO-MOP PLUSH

1. Remove dust and dirt with the Osmo Dust-Mop (page 46)
2. Add the Wash and Care solution to warm water (1 cap per 1L of warm water)
3. Use the Osmo Micro-Mop Plush and clean the area
4. Wipe dry immediately

WITH A FLOOR BUFFER

1. Remove dust and dirt with a vacuum and broom
2. Add the Wash and Care solution to warm water (1 cap per 1L of warm water) and mop onto the floor
3. Using a red cleaning pad, buff the solution into the surface and wipe away residue using a rag or cloth

01

Contains soaps based on natural oils

02

Wood does not dry out from regular cleaning

03

Water-soluble ingredients prevents streaks and increase slip resistance

04

Gentle on skin, free of dyes and aromas, biodegradable and free of solvents and emissions



Spray Cleaner

Osmo Spray Cleaner is a ready-to-use sprayable version of the Wash and Care solution. It's particularly suited to smaller areas of treated wooden surfaces like chopping boards and furniture. It is safe for everyday cleaning and care.



Clear
8026

Approx Dry Time
Wipe to dry

Available Sizes
500 mL



APPLICATION METHOD

WITH A CLOTH

1. Wipe any loose debris
2. Turn the nozzle to open and spray directly onto surface
3. Wipe with a lint-free cloth

01

Ready mixed - do not dilute

02

Wood does not dry out from regular cleaning

03

Contains plant based soaps

04

Water-soluble ingredients prevents streaking

05

Gentle on skin, free of dyes and aromas, biodegradable and free of solvents and emissions



Intensive Cleaner

Osmo Intensive Cleaner removes the top layer of waxes and any dirt or stains prior to the application Osmo Maintenance Oil. Osmo Intensive Cleaner is designed for wood flooring professionals. It's powerful product for the effective deep cleaning of wooden floors.



Clear
8019

Available Sizes
1L



APPLICATION METHOD

WITH A FLOOR BUFFER / APPLICATOR PAD

1. Clean surface with a vacuum or broom to remove all dirt and debris
2. Mix 1 part Osmo Intensive to 20 parts of water - for tougher areas mix 1 part Osmo Intensive to 10 parts of water
3. Use a green scrubbing pad and floor buffer to thoroughly clean away oils and waxes. We recommend doing a test area first.
4. Using liberal amounts of warm fresh water, neutralize surface
5. Dry thoroughly prior to finishing with Osmo Maintenance Oil

01

Specifically engineered for use on oil or waxed surfaces

02

Alkaline based solution that strips oils and waxes

03

Can be used to clean plastics, stainless steel and other waterproof surfaces

04

Not suitable for daily use / regular cleaning



Opti-Set

Mop set for optimal cleaning of wooden floors, to be used with Osmo maintenance products.

CONTAINS

- Telescopic Handle
- 1 Dust-Mop
- 1 Micro-Mop Plush
- 1 Active Fiber Cloth



DUST-MOP

Designed for dry cleaning of dust, lint and animal hair. Very soft and gentle on hardwood floors. Easily removable. Machine washable.



MICRO-MOP PLUSH

For use with the Osmo Wash and Care cleaning concentrate. The fleece cloth provides an easy and streamlined approach to traditional mopping, leaving floors smear free. Easily removable. Machine washable.



ACTIVE-FIBER CLOTH

This cloth attachment is intended for use with the Osmo Liquid Wax Cleaner. Easily removable. Machine washable.



Floor Maintenance Kit

Complete set for the care and maintenance of floors treated with Osmo Polyx®-Oil.

CONTAINS

- 1L Wash And Care - 1L
- 400mL Liquid Wax Cleaner Spray
- 3 Cloths
- 1 Abrasive pad



Brush Cleaner and Thinner

Our Benzene-free cleaner is a high quality, low odour cleaner for natural bristle brushes and microfiber rollers. It gently remove oils and waxes from your tools without damaging the bristles or fibers. This product can also be used as a thinning agent for solvent-based oils and acrylic paints.

- Low odour
- Environmentally friendly
- Benzene-free



Application Tools

Telescopic Handle	36
Roller Frames	36
Microfiber Rollers.....	36
Floor Brushes	37
Hand Pad Holder	37
FloorXCenter and Application Pads	38
Flat Brushes	39
Easy Pads	39
Double Blade Trowel	39



Telescopic Handle System

The Osmo Telescopic Handle can be attached to different application tools, allowing for a range of techniques to be used when applying Osmo. The handle extends from 1.2 meters - 2 meters so you don't have to bend down to brush finishes onto your flooring, or decking.

- One telescopic handle
- Quick Connect technology makes it fast and easy to use
- Extends to up to 2 meters long



Roller Frame

This Osmo Roller Frame connects to the Telescopic Handle, making large scale jobs easy to execute. It fits our premium Microfiber rollers, which are sold separately.

Available Sizes

100mm wide (for edging and furniture)

220mm wide (for flooring)



Microfiber Rollers

Offers seamless application of Osmo products for an even, professional finish.

Available Sizes

100mm wide (for edging and furniture)

220mm wide (for flooring)



Floor Brush

Made from 100% natural bristles and beech wood, these high-quality made in Germany brushes are designed for the quick and easy application of Osmo wood finishes on flooring.

Available Sizes

150mm wide (fit to decking board width)
220mm wide
400mm wide



Hand Pad Holder

Suitable for application, cleaning and maintenance. Very useful for corners and edges. Available as an attachment for the Telescopic Handle or as a manual hand-held holder (pictured).

Available Attachments:



MICROFIBER PAD

For applying oils to wooden surfaces easily and evenly



WHITE SUPERPAD

Non-abrasive white pad used to buff in all Polyx®-Oil finishes



RED SUPERPAD

Use for cleaning with Wash and Care solution and buffing Maintenance products



2K GREEN SUPERPAD

Used for stripping Oils and Waxes in conjunction with the Osmo Intensive Cleaner



FloorXCenter

The Osmo FloorXCenter is a lightweight, easy to handle floor buffer that can be used with multiple different Pads to facilitate staining, resurfacing, cleaning and maintenance.

It has a built-in soap dispenser which enables the user to dispense the optimal amount of a pre-loaded cleaner, such as Osmo Intensive Cleaner, or Osmo Wash and Care for easy floor maintenance.

The Brush Ring attachment can be used with Osmo Intensive Cleaner to clean highly soiled flooring or wire brushed flooring.

- Lightweight
- Built in soap dispenser for cleaning usage
- Interchangeable pads

Available Attachments:



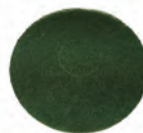
WHITE SUPERPAD

Non-abrasive white pad used to buff in all Polyx®-Oil finishes.



RED SUPERPAD

Use for cleaning with Wash and Care solution and buffing maintenance products.



2K GREEN SUPERPAD

Used for stripping oils and waxes in conjunction with the Osmo Intensive Cleaner.



SOFT MICROFIBER WHITE SUPERPAD

For cleaning and refreshing flooring. Machine washable.



BRUSH RING

Wire bristle teeth for intensive cleaning. Can be used with Osmo Intensive Cleaner for very soiled flooring.



8" CIRCULAR WHITE SUPERPAD

Same as the White Superpad but smaller.



Flat Brush

Osmo Flat Brushes are made from 100% natural bristles, these high-quality made in Germany brushes are designed specifically for the quick and efficient application of Osmo.

Available Sizes

25mm, 50mm, 60mm, 100mm



Easy Pads

Osmo Easy Pads are soft and lint-free cloths, ideal for applying Osmo colour products; as well as for the cleaning and maintenance for wooden surfaces. 10 per pack.



Double Blade Trowel

High quality, double-bladed trowel. One flexible side (for initial application) and one rigid side (for excess removal). Use in large sweeping “figure 8” movements to spread finish across the wood surface.



Mix it up!

With Osmo **Wood Wax Finish**, you can achieve both subtle stains in soft tones and bright, bold colours to enhance your wood.

How do you achieve the right colour tone? Really easy: on the following pages pick the colour you'd like to create and mix the base ingredient amounts listed underneath. If you want to make the colour tone lighter or darker you can make adjustments to the mixture percentages as needed.

It's important you stick to one product and not cross mix. Wood Wax Finish colours can only be mixed with other Wood Wax Finish colours.

Unsure which colour to create? With our Wood Wax Finish sample sachets you can test whether you like it or not. Each sample sachet covers an approx area of 20 x 30 centimetres.

Available from your local Osmo dealer visit osmo.ca to find your nearest retailer.

Tone it down

Bring a touch of Scandinavia in your home: Take a colour of your choice and mix it with a lighter colour, such as white. The result is a softer, pastel tone for a cosy, relaxing room.

WOOD WAX FINISH INTENSE COLOURS

Mix with **Snow 3188**



Colour Mix
3188 / 100g Snow
+
3105 / 10g Yellow



Colour Mix
3188 / 100g Snow
+
3125 / 5g Blue



Colour Mix
3188 / 100g Snow
+
3104 / 10g Red



Colour Mix
3188 / 100g Snow
+
3131 / 5g Green

WOOD WAX FINISH INTENSE COLOURS

Mix with **White 3111**



Colour Mix
3111 / 100g White
+
3138 / 10g Mahogany



Colour Mix
3111 / 30g White
+
3138 / 10g Mahogany



Colour Mix
3111 / 10g White
+
3138 / 10g Mahogany

Remix it

The colour you are looking for is not available as a finished product? No problem: maybe it is in our selection of mixtures. Just mix the colour tones as described in the instructions and apply it to the desired surface. Want to try something new? Great idea. First try out a small amount– order some sample sachets to test.

WOOD WAX FINISH INTENSE COLOURS



Colour Mix
3188 / 87g Snow
+
3169 / 3g Black
+
3131 / 5g Green
+
3105 / 5g Yellow



Colour Mix
3188 / 2g Snow
+
3131 / 62g Green
+
3105 / 37g Yellow



Colour Mix
3104 / 70g Red
+
3105 / 35g Yellow

WOOD WAX FINISH INTENSE COLOURS



Colour Mix
3101 / 10g Clear
+
3123 / 10g Pine



Colour Mix
3101 / 10g Clear
+
3137 / 10g Cherry



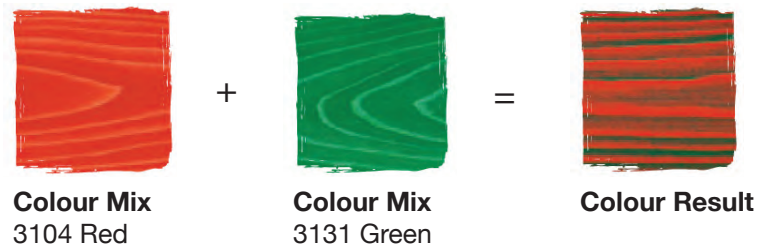
Colour Mix
3101 / 10g Clear
+
3138 / 10g Mahogany



Colour Mix
3101 / 10g Clear
+
3164 / 10g Oak

Stir it up

Looking for a special effect for some furniture? Then the two-tone technique is just the thing for you: apply one colour to a textured wood surface and once it is completely dried, apply a second colour. Pull a squeegee over the surface while it is still wet. On the raised areas, the first colour will reappear and the second will stay in the grooves of the wood. This really makes the wood grain stand out.



APPLICATION METHOD

1. Apply Osmo Wood Wax Finish in your first colour.
2. After drying for at least 24 hours, apply your second colour.
3. Before the second coat dries, pull a squeegee over the surface. The first colour reappears on the raised parts and the second colour stays in the grooves.



PRODUCT APPLICATION TIPS:

Application Recommendations

Osmo recommends approx **60g/m²** coverage for highest durability and best stain-resistance. High wear surfaces include: Floors, stairs, tabletops, countertops and cutting boards. Different applicators will provide different effects in regards to colour, sheen and performance.

Please note: 60g/m² full coverage suggestion is based on woods such as Oak, Walnut, Elm, Cherry and Ash. For very dense wood species such as Maple, the surface will absorb less oil and therefore a lower application amount of 45g/m² is advised.



Easy pads

- Applies 5g / m² per coat
- A minimalistic finish retaining wood texture and providing subtly glazed colours
- Not suitable alone for high-wear surfaces



White, Non-Abrasive Superpad

- Applies 10g / m² per coat
- A minimalistic finish, lower product waste, can be buffed to high lustre
- **Not** recommended for high-wear surfaces



Oil Finish Applicator Fleece

- Applies 15g / m² per coat
- Most user friendly, small build, medium colour intensity
- 3 coats recommended for high-wear surfaces



Flat Brush

- Applies 20g / m² per coat
- Best for textured surfaces, and intensive colour applications
- 2-3 coats recommended for high wear surfaces



Microfibre Roller (4mm nap)

- Applies 30g / m² per coat
- Fastest application, high build for maximum protection
- 2 coats recommended for high-wear surfaces



Spray Finish

- Applies 30g / m² per coat
- **Professional use only** - training recommended
- 2 coats recommended for high-wear surfaces

Osmo product recommendations for different wood species

	POLYX®-OIL / POLYX®-OIL ORIGINAL	POLYX®-OIL PURE	WOOD WAX FINISH CLEAR EXTRA THIN	WOOD WAX FINISH	OIL STAIN
Acacia / Wattle	+1	+1	O	+1	*
Afromosia	—	—	*	—	—
Alder	*	*	O	*	*
Ash	*	*	O	*	*
Bamboo	+1	+1	O	—	—
Beech	*	*	O	O	*
Birch	*	*	O	*	*
Cherry	+1	+1	O	—	—
Cork	+1	+1	O	+1	*
Doussie / Afzelia	—	—	*	—	—
Elm	*	*	O	*	*
Eucalyptus	+1	+1	O	O	O
Ipe	—	—	*	—	—
Jarraah, Australian	*	*	O	*	*
Jatoba	—	—	*	—	—
Kambala / Iroko	—	—	*	—	—
Kempas	+1	+1	O	O	O
Larch	*	*	O	*	*
Mahogany	—	—	*	—	—

* Recommended

+1 Thin Application

O Possible

— Not Recommended

	POLYX®-OIL / POLYX®-OIL ORIGINAL	POLYX®-OIL PURE	WOOD WAX FINISH CLEAR EXTRA THIN	WOOD WAX FINISH	OIL STAIN
Maple	*	*	O	O	O
Merbau	+1	+1	+1	O	O
Oak	*	*	O	*	*
Oak, smoked	+1	+1	O	+1	*
Olive	+1	+1	*	—	—
OSB, sanded	+1	+1	O	+1	*
Pear	*	*	O	*	*
Pine	*	*	O	*	*
Pitch Pine	*	+1	O	*	*
Black Locust	*	*	O	*	*
Rosewood	—	—	*	—	—
Spruce / Pine	*	*	O	*	*
Teak	O	O	*	O	O
Tigerwood	+1	+1	O	—	—
Walnut	+1	+1	O	O	*
Walnut, American	+1	+1	O	O	O
Walnut, Claro	—	—	*	—	—
Wenge	—	—	*	—	—

* Recommended

+1 Thin Application

O Possible

— Not Recommended

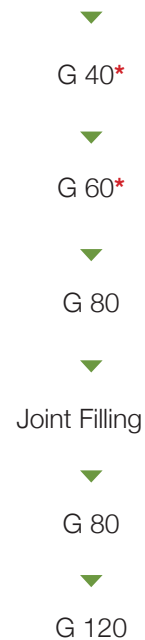
Note: For oily exotic wood species such as Teak, Ipe, Rosewood, etc we suggest to use Wood Wax Finish 1101 Clear Extra Thin either as a stand-alone finish or as a base-coat prior to treating with Polyx-Oil(s) or TopOil.

Sanding using a single or multi-disc sanding machine

NEW INSTALLATION OR RENOVATION



NEW INSTALLATION WITH MINIMAL OVER/UNDER WOOD



* Depending on the condition of the flooring, start with one of these grits.

IMPORTANT

For an ideal surface, sanding screen must be used for the final step. The grit of the sanding screen must be the same as the grit used for the sanding discs in the previous step.

Directly before starting each work step, thoroughly vacuum the floor and expansion gap.

Sanding using a belt or drum sanding machine

NEW INSTALLATION



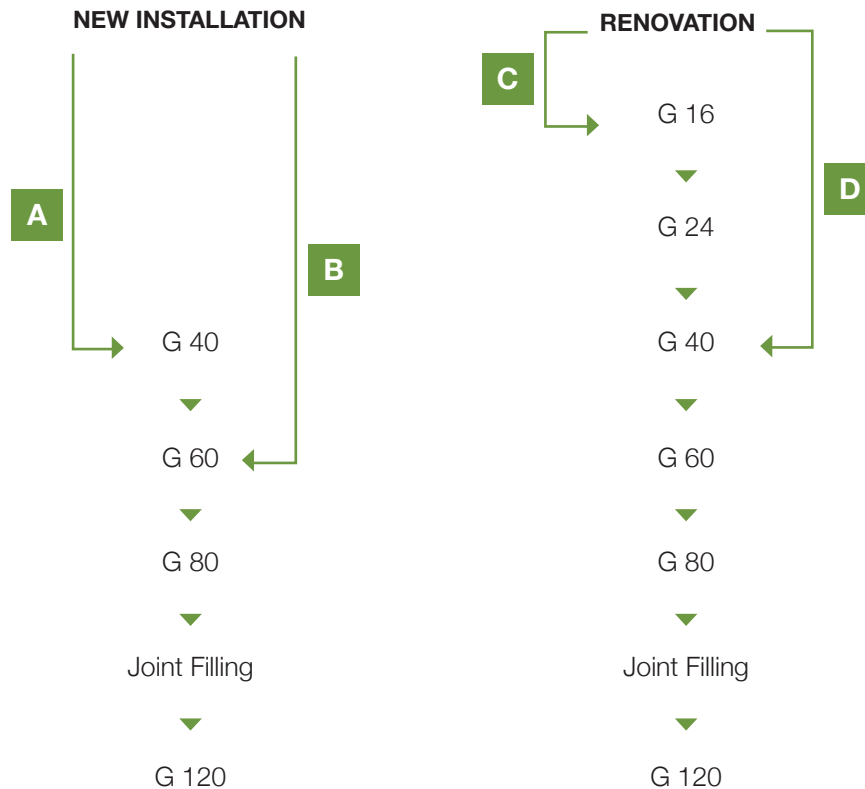
RENOVATION



Check surface quality and perform additional sanding steps depending on the result.

Change to a single disc machine for the final sanding step.

Sanding using an edge sander



IMPORTANT

To keep the transition area between the edge and the remaining field area from being noticeable, the following sanding step sequence has to be maintained:
For field sanding with a drum or belt sanding machine and for the subsequent sanding step with the edge sanding machine, always use the same grit.

Step 1. Field = G 24
Step 2. Edge = G 24



Step 3. Field = G 40
Step 4. Edge = G 40

KEY

- A** Large differences in height between the individual wood elements.
- B** Small differences in the height between the individual wood elements.
- C** Thick layer of finish, large amount of dirt, stains or scratches.
- D** Thin layer of finish, normal amount of dirt, stains or scratches.

Well prepared for best results.

Perfect sanding is a must for a clean and professional finish. Before applying Polyx®-Oil, Wood Wax Finish or Oil Stain, wooden flooring has to be sanded with a fine grit. The deeper the sanding marks are, the more noticeable the indentations and irregularities will appear, especially with colour finishes. Once the last step is complete the surface should be inspected to ensure the sanding quality is sufficient before application.

We recommend 120 grit for flooring and 220 grit for furniture.

Contaminants such as grease, oil or cleaning agents must be carefully removed as they can affect the bonding of the Osmo product.

PRODUCT APPLICATION TIPS:

Flooring, countertops, tables and high-traffic areas

Polyx-Oil® 3043, 3031, 3011 TopOil 3056, 3026

- Brush or Roll on two coats thinly and evenly with an Osmo 4mm roller

Polyx-Oil® Raw 3051 TopOil Natural 3025

- Brush on two coats thinly and evenly
- *Optional - light sand 320-400 grit after last coat then buff in a thin coat with a cloth

Intended for light coloured woods only

Wood Wax Finish

- Not suitable for flooring, countertops, and tables on its own
- Buff in one coat with a white non-abrasive pad or cloth
- MUST be protected with Polyx®-Oil or TopOil:
 1. Roll or brush one coat of Polyx®-Oil or TopOil
 2. Buff second coat of Polyx®-Oil or TopOil with a non-abrasive pad



WATCH: Visit youtube.com/OsmoCanada to watch application and maintenance videos.

Oil Stain

- Not suitable for flooring, countertops, and tables on its own
- Buff in one coat with a white non-abrasive pad or cloth
- MUST be protected with Polyx®-Oil or TopOil:
 1. Roll or brush one coat of Polyx®-Oil or TopOil
 2. Buff second coat of Polyx®-Oil or TopOil with a non-abrasive pad

Walnut, or dark, oily exotic hardwoods

- Wood Wax Finish 1101 first. Apply 1-2 coats letting it soak into the wood then wipe off excess after approximately 20-30 minutes
- Roll or brush one coat of PolyX-Oil or Top Oil thinly and evenly – do not wipe off after

Important

Allow 8-12 hours to dry in-between coats.
Let the piece cure for 3 weeks before any heavy use being careful to wipe up any spills right away in this time. Do not cover (i.e mats, area rugs, etc.)

Osmo FAQs

WHAT GRIT DO I SAND TO?

For softwood floors 100 Grit. For hardwood floors 120 Grit. For furniture 150-220 Grit.

WHAT DO I DO IF MY FLOOR IS DAMAGED?

Unlike many traditional finishes, floors treated with Osmo can be sanded and re-coated with the same product without leaving any visible transition marks.

DO I NEED TO SAND BETWEEN COATS?

You should always assess the surface before applying a second coat, as sanding between coats might be needed.

IS THERE ANYTHING I SHOULD BE AWARE OF WHEN TREATING HARDWOOD FLOORS?

Due to the density and the content of wood extractive in some hardwoods, such as Jatoba and Merbau, they can only absorb a small amount of finishing product. We recommend treating hardwood floors with Wood Wax Finish Extra Thin or Polyx®-Oil Pure, which have been specially developed for such woods.

WHAT SHOULD I DO IF I'VE OVER-APPLIED OSMO?

Drying time will be lengthened considerably. If this happens, provide additional ventilation by opening windows and doors so the product can dry naturally through oxidation. If damage occurs to the surface as a result, sand and spot repair the area.

WHAT HAPPENS IF I HAVEN'T APPLIED ENOUGH FINISH?

If you haven't applied enough Osmo product you may see water spots, the wood may dry out or appear dull. In such cases apply another thin coat of Polyx®-Oil.

CAN I MIX COLOURS TOGETHER?

Yes, Osmo colour products can be mixed together to create a wider range of tones.

HOW LONG DOES IT TAKE FOR A SURFACE TO DRY?

Most Osmo products dry within 8-12 hours. The surface dries through oxidation and absorption. Ensure there is sufficient ventilation otherwise dry times may be longer.

WHEN IS THE FLOOR ACCESSIBLE AGAIN?

Generally flooring is accessible one day after the final coat of Osmo is applied. However you must ensure the final coat is dry to the touch. The surface will take 14 days to **fully cure**. As a result, rugs shouldn't be placed on the surface before 2-3 weeks.

DOES THE FLOOR NEED POLISHING ONCE THE TOP COAT OF POLYX®-OIL HAS BEEN APPLIED?

No, at this stage no further floor treatment is necessary. However, the surface can be buffed with a white pad after the finish is dry if a higher level of gloss is desired. The floor can be treated with Osmo Liquid Wax Cleaner after one day at the earliest.

HOW DO I MAINTAIN MY FLOOR?

This all depends on how much the floor is used. For regular gentle cleaning we recommend mopping with Osmo Wash and Care. If the floor starts to look a little dull, simply restore it by using Osmo Liquid Wax Cleaner. This can be done in small areas (near entry ways, high traffic spots), without needing to restore the whole floor. If the signs of wear are more substantial (commercial use), the floor should be cleaned with Osmo Intensive Clear and a new coat of Polyx®-Oil should be applied.

WHY DOES THE PRODUCT COLOUR LOOK DIFFERENTLY ON THE CAN?

Depending on the wood species, finishes can appear different in colour tone. We recommend a trial application on a small area to check you're happy with the colour. Sample sachets are available.

WHAT SURFACE PROPERTIES ARE BEST FOR APPLYING OSMO?

The surface should be clear of dirt, dry (max 20% moisture content) and frost-free.

WHAT DOES WOOD TREATED WITH OSMO SMELL LIKE?

After drying, the surface will have a slight smell of wood and natural oils and waxes. We use a deodorized mineral spirit in our products which 100% dissipates when dry, meaning there is no smell.

DO OSMO PRODUCTS CONTAINS HARMFUL SUBSTANCES?

Osmo products are based on carefully purified natural oils and waxes. When dry, surfaces are safe for humans, animals and plants. Our products have been accredited as suitable for use on children's toys according to DIN EN 71.3 and resistant to saliva and perspiration according to DIN 53160. For more information on our accreditation read page 11.

SAFETY NOTICE



Cloths saturated with product are a spontaneous combustion hazard and should be left out unfolded until dried, prior to disposal or preferably stored in a proper fireproof container.

For more information or to ask an Osmo representative a question, please send us an email to info@osmo.ca or call **+1-844-OSMO-CAN** (6766-226)

Credits and Thanks

Osmo Holz Und Color GmbH & Co. KG
Northern Wide Plank
Dakota Floors
Osmo Nordic
Osmo Thailand and Vietnam

Designed by L.N. Studios

Osmo Canada

420 Thompson Drive
Unit 2
Cambridge, ON
N1T 2K8

8812 51 Avenue, NW
Edmonton, AB
T6E 5E8

© Osmo Canada
2.0

Technical modifications and delivery rights reserved. Measurements, pricing and photography are subject to change.

Although we check our brochures thoroughly, we cannot completely rule out the possibility of a printing mistake. The colour tones shown in this brochure are non-binding. In the interest of product development and improvement we reserve the right to technically modify products.



www.osmo.ca