

# QUICK START GUIDE



**FUJISPRAY® D6**

# D6 SYSTEM

## BOX CONTENTS



**D6 Turbine Unit**



**Power Cord**



**D6 Wireless Remote**



**30 ft Super Duty Air Hose**

### **6 for 6 Bonus Package**

1. 6 ft Whip Hose
2. Extra Air Cap Set (1.8mm)
3. Extra Full Set of Filters (HEPA, Motor Air Intake, 2 Pre-Filters)
4. Cleaning Kit (19 pcs)
5. Wet Film Gauge
6. Always Measure Booklet

Use With Your Selected **FUJISPRAY®** Spray Gun



**T70**




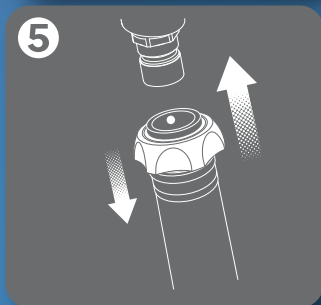
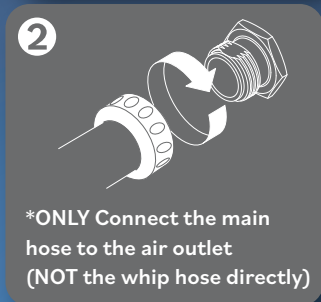
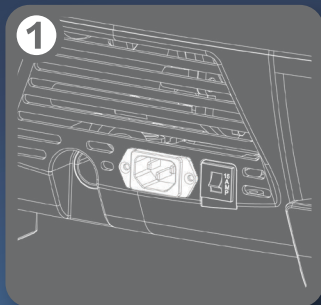
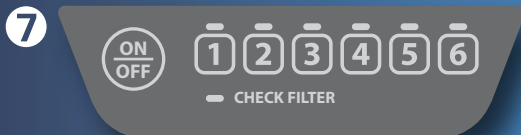
**T75G**



**GXPC**

# GETTING STARTED

- 1 Connect power cord to D6 Turbine and plug power cord to power source
- 2 Connect hose to D6 Turbine
- 3 Fill cup with desired coating
- 4 Attach whip hose to main hose
- 5 Attach whip hose to spray gun using quick connect
- 6 Turn on unit by pressing  once
- 7 Select Motor Power Level by pressing desired level once





For technical assistance, please contact us at:

1-800-650-0930

or visit:

[www.fujispray.com/contact-us](http://www.fujispray.com/contact-us)



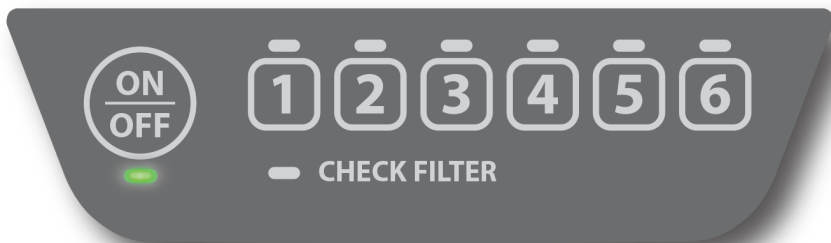
Detailed User Manual can be located in system carton or at:

[fujispray.com/library](http://fujispray.com/library)

The perfect finish starts with **FUJISPRAY®**

# CONTROL PANEL

The D6 is designed and engineered to spray almost all coatings unthinned, including very high viscosity coatings using the power of 6 stages.



## COATINGS REFERENCE CHART

1

Thinner viscosity products. Shading and toning stains, inks, touchups, and dyes.

2

Automotive enamels, airplane and marine finishes, nitrocellulose lacquers, pre-cat lacquers, shellacs, sealers, acrylics, synthetics, polyurethanes, stains and varnishes.

3

4

Catalyzed lacquers, primers, varnishes, urethanes, enamels, high viscosity industrial coatings, sealers, polyurethanes, oil based paints, epoxy enamels, plastics, floor paving paints, latex (walls and ceilings), and multi-fleck paints.

5

Stone finishes, texture coatings, industrial primers, water-based 2K acrylic topcoats, high viscosity industrial coatings, and nitrate dope.

6

Suggestions on usage should be used as a guide only.

Experimentation is the best method to determine which setup performs best for your desired coating.

# REMOTE CONTROL

PAUSE and RESUME from a distance (up to 75 ft):

- 1 Turn unit ON 
- 2 Choose desired Motor Power Level on Control Panel
- 3 Use Remote Button  to PAUSE
- 4 Press Remote Button again to RESUME at the same setting
- 5 Turn unit OFF 



After 30 minutes in PAUSE mode, the unit will power off automatically.

# FLIP-UP GUN STOCK

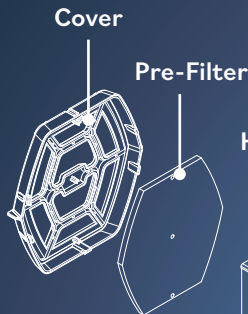
FOR EASY GUN STORAGE

- 1 Flip up the gun stock pin to stow your spray gun.
- 2 Detach gun from hose and slide on to the pin.
- 3 To store the pin, fold back down flush with the turbine.

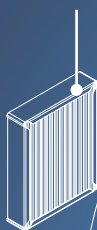
Do not transport D6 with  
spray gun on gun stock pin.



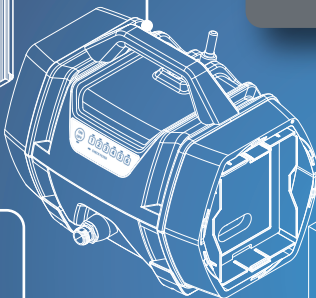
# EASY ACCESS FILTERS



HEPA Filter



Turbine



Motor Air  
Intake Filter



Pre-Filter



Cover



Twist filter cover  
and pull to remove  
to access filters



## CHECK FILTER

### INDICATOR LIGHT

YELLOW - Warning

When lit, check the Motor Air Intake Filter and clean or replace as necessary.